



Propello Innovations Pvt.Ltd.

Registered Office  
6, Sarat Chatterjee Road, Kolkata - 700 089

Branch Offices  
Guwahati | Bhubaneshwar | Patna

✉ info@propello.in   🌐 www.propello.in   📘 propelloinnovation

For more information call: Toll Free No. 1800 121 0600  
Propello is the Registered Trademark of Propello Innovations Private Limited.  
CIN: U74900WB2009PTC137818



# KARVY<sup>+</sup>

WATER PURIFIER



*as pure as nature*





About Karvy Plus	01
Table of Chemical Constituents	02
Principle of Osmosis and Reverse Osmosis	03
Salient Features	04
Installation	06
Usage	07
How does Karvy Plus RO + UF works	08
Water Flow Diagram	09
Problem, Check Points and Solutions	10
System Warranty	11
Technical Specifications	12
Warranty Card	13
Warranty T&C	14
Service Record	15



Congratulations and a warm welcome to the World of Propello Water Purification Systems.

Karvy Plus RO+UF with TDS Controller is a result of our constant endeavor to provide 100% Pure and Healthy drinking water.

Karvy Plus water purifier uses Reverse Osmosis Technology to remove all kinds of impurities, chemicals and micro-organisms. This technology also removes the hardness of water. UF Filtration is used to eliminate all water borne micro-organisms from water and keep the storage tank water more crystal clear.

Karvy Plus water purifier uses TDS controller to maintain the necessary amount of minerals in the water. With the use of RO Technology and other filtration stages, Karvy Plus water purifier ensures that you get the purest drinking water.

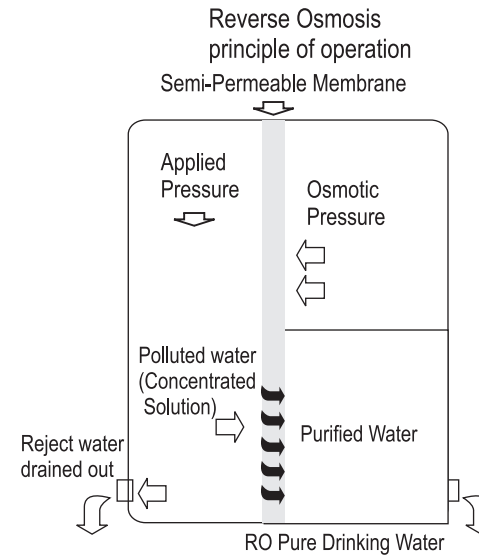
Here's wishing you and your family a happier and healthier life.

With Warm Regards,  
Propello Family

## Table of Chemical Constituents

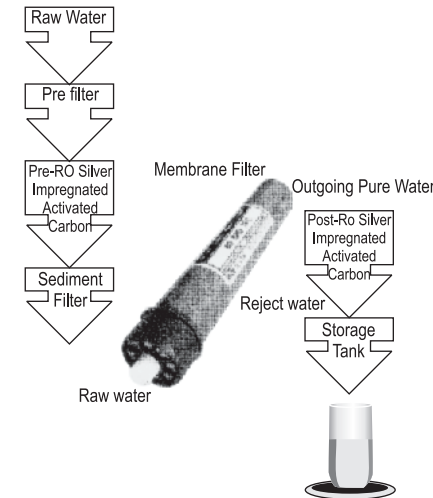
The Table below gives an insight on how chemical impurities can impact your health

Chemical Constituent	Requirement (Acceptable limit) 1510500-2012 Drinking water specification	Undesirable effect outside the desirable limit
Total Hardness as CaCO <sub>3</sub> mg/L, max	200	Encrustation in water supplying structure and adverse effects on domestic use
Total dissolved solids	500	Beyond this palatability decreases and may cause gastro-intestinal irritation
Iron (Fe) mg/L, max	0.3	Beyond this limit taste, appearance is affected, has adverse effect on domestic uses and water supplying structures. It also promotes iron bacteria
Chlorides (Cl) mg/L, max	250	Beyond this limit taste corrosion and palatability are affected
Nitrate (NO <sub>3</sub> ), mg/L, max	45	Beyond this methaemoglobinemia takes place
Fluoride (F) mg/L, max	1	Fluoride should be kept as low as possible. High fluoride may cause fluorosis
Mercury (Hg) mg/L, max	0.001	Beyond this limit the water becomes toxic
Arsenic (As) mg/L, max	0.01	Beyond this limit the water becomes toxic
Lead (Pb) mg/L, max	0.01	Beyond this limit the water becomes toxic



### What is Osmosis?

In living cells movement of liquids takes place through a semi-permeable membrane separating solutions of different concentrations. Passage of water from weak solution through a semi-permeable membrane is called osmosis. Osmosis is a vital mechanism in the transport of fluids in living organisms. For example, uptake of water from earth and also transport of water between cells in case of plants.

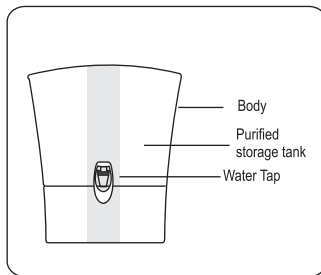


### What is Reverse Osmosis?

Reverse Osmosis (RO) is when osmosis is reversed by applying external pressure to the more concentrated side (polluted side). The water is forced through a synthetic semi-permeable membrane that allows only water (H<sub>2</sub>O) molecules. When pressure is applied to the concentrated solution, the water passes through the membrane and the rest is left behind, to be drained out. In the Reverse Osmosis System, water is pushed under high pressure through a very fine membrane of pore size 0.0001 micron. So the water that comes through the membrane filter is free from total dissolved solids, hardness, micro-organisms, chemicals, other metal contaminants, particles and VOC.

## Salient Features

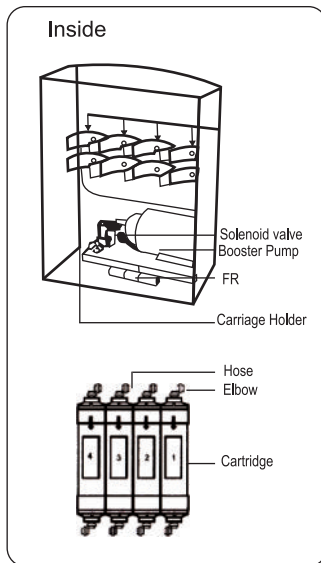
- Suitable for mounting or counter-top installation
- Purification by RO + UF + TDS Controller + Essential Minerals
- Adjustable TDS Control System allows TDS adjustment of purified water
- 9 liter storage capacity
- RO membrane fused inside membrane housing to prevent tampering
- Extremely mounted SMPS for protection
- Push-fit components for leak-proof & maintenance free performance
- Fully automatic operation with auto-on and auto-off
- ABS construction for corrosion-free life span
- Equally suitable for water from all sources



- Karvy Plus Reverse Osmosis System provides close to 100% removal of almost all unwanted and harmful substances
- LPS prevents the pump from dry running in case the overhead tank is empty
- Automatic Float Level Micro-switch controls the water level automatically and shuts off the pump when the storage tank is full
- The innovative design of tap allows movement in two directions.
- The Karvy Plus Reverse Osmosis System will enhance any home with functionality and so in style!

## Additional Benefits of Karvy Plus

- You can truly get the flavors of coffee and tea with Karvy Plus water
- True flavors and aromas of all cooked foods will be experienced.
- Ice cubes will be clear and sparkling
- Appliances that use water (your steam iron/electric kettle) will be more effective and last longer



## Salient Features

### RO Technology:

Unique RO Technology membrane removes excess TDS, blocks dissolved impurities and chemical contaminants, while retaining essential minerals in the drinking water.

### TDS Controller:

Advanced TDS Controller regulates the purification process as per the source of water, thereby providing 100% healthy, safe, pure and tasty drinking water.

### Booster Cartridge:

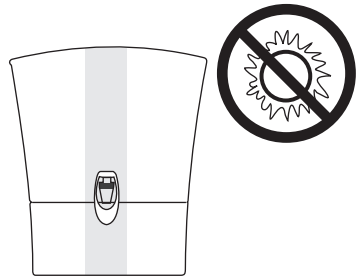
- Make the water nutrient, by providing essential minerals.
- It provides healing effects and improves health immunity
- Enhance the taste of water.
- It balances the pH level of your drinking water.
- It helps in protecting the storage tank water from external bacterial contamination.

### Total Protection:

Eliminates tough new age contaminants like lead, pesticides and heavy metals from water. It also ensures that water is free from disease-causing bacteria, virus and protozoa.

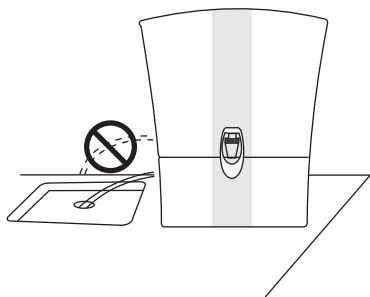
### Large Storage Capacity:

It comes with a 9-litre in-built storage tank. Thereby ensuring purified water on tap, all the time.



### Install it in a dry ventilated place

- Keep it away from direct sunlight or below freezing temperature. Connect it to only cold tap water
- Filters can be damaged if connected to hot tap water
- Make sure that the tap water pressure is max. 2.0 kg/sq.cm if the tap water pressure you receive is higher than the maximum specified, the use of a pressure reducing valve is recommended. The above accessory is available with our company at an additional cost.
- If not, water might flow back into the purifier.
- Make sure that the purifier is installed within the distance of 1m (max) from the tap water supply.
- This purifier is for 230V only so make sure that you connect to a 230V power outlet.
- Do not install the purifier in a place where water of rain could leak into it (Outdoor etc.).



Water is a rapidly depleting source. It is our moral responsibility to ensure that water is recycled as much as possible. The water flushed by the purifier can be used for

### Can be used for Watering plants

This water can be used for watering plants.



### Cannot be used for

Cleaning utensils, daily household cleaning, washing clothes and drinking purpose



### Check points before calling our Service Department

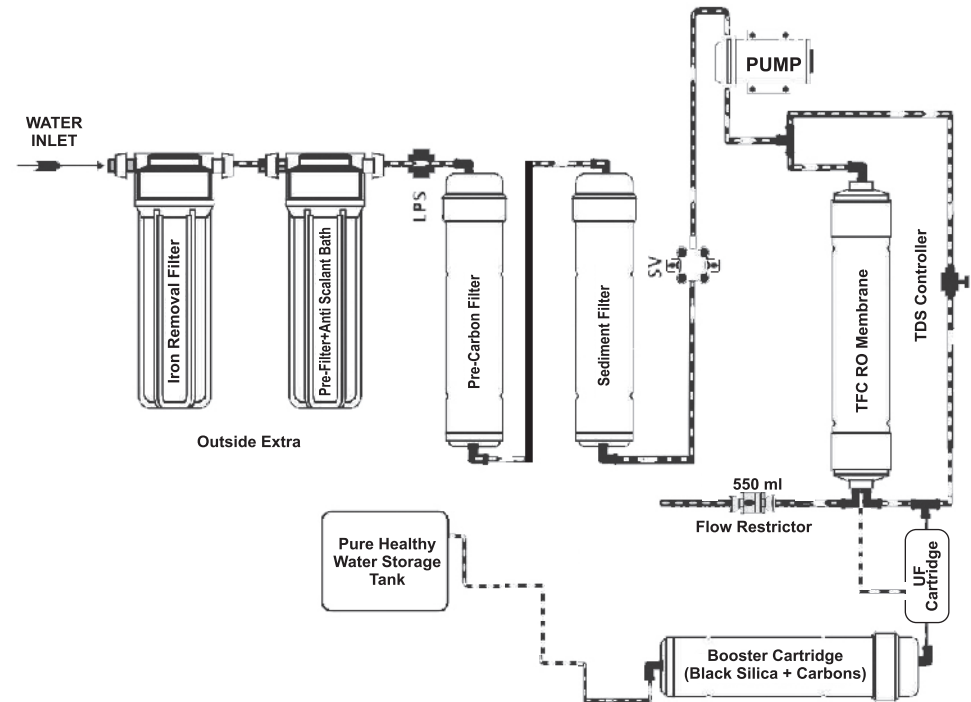
Before you panic and call our service department, here are some simple steps to be followed. Most times you'll find that one or a combination of these will solve the problem/s. When these steps at your end fail then immediately call our helpline/service department and we will take up your case on priority. Thank You.

## How does Karvy Plus RO + UF + TDS Controller + Essential Minerals System works?

The stages of Karvy Plus are as follows:

Stage	Component	Function
1	Iron Filter	Helps in removing dissolved iron from water
2	Pre-filter yarn polypropylene	Removes suspended impurities like dirt, mud, rust and sand etc.
3	Anti-scalant	Helps improving the life of the RO membrane
4	Pre-carbon Filter Silver impregnated Activated Carbon	Removes excess chlorine, bad odour, colour, bad taste and organic impurities and organic impurities
5	Sediment Filter Melt blown Yarn polypropylene	Removes fine particles such as dirt, dust, mud and sand
6	Reverse Osmosis Membrane Thin Film Composite (TFC) 0.0001 micron	Removes TDS, hardness, fluoride, pesticides, VOC, heavy metals like lead, mercury, cadmium & Arsenic etc. Removes micro-organisms like bacteria, viruses and protozoan cysts
7	TDS Controller	Advanced TDS controller regulates the purification process as per the source of water, thereby providing 100% healthy, safe, pure and tasty drinking water.
8 & 9	Booster Cartridge • Black Silica • Post RO Carbon	<ul style="list-style-type: none"> <li>• Makes the water nutrient rich, by providing essential minerals.</li> <li>• It provides healing effects and improves health immunity.</li> <li>• Enhance the taste of water.</li> <li>• It balances the pH level of your drinking water.</li> <li>• It helps in protecting the storage tank water from external bacterial contamination.</li> </ul>
10	Ultrafiltration (UF):	UF ensures that every drop of water is pure and safe by ultrafiltration removing organic molecules & micro-organisms.

### WATER FLOW DIAGRAM





Problem	Check Points	Solutions
Water tastes bad	<ol style="list-style-type: none"> <li>1. Is the storage tank clean?</li> <li>2. Have you kept the purified water in the tank too long?</li> <li>3. Is it time to change filters?</li> </ol>	<p>Dispose off water and clean the tank.</p> <p>Call our service department to change filters.</p>
Here is too much or too little water being purified	<ol style="list-style-type: none"> <li>1. Is the tap water valve closed?</li> <li>2. Is the tap water temperature too low?</li> <li>3. Filters may be clogged or damaged.</li> <li>4. Pump or SV has failed.</li> </ol>	<p>Open the tap water valve.</p> <p>If so, the amount of purified water will be reduced.</p> <p>Call our service department and change filters.</p> <p>Call Service department to rectify/change</p>
Water doesn't come out.	<ol style="list-style-type: none"> <li>1. Is there water in the tank?</li> <li>2. Is tap water supplied?</li> <li>3. Is the tap water valve closed?</li> <li>4. Not sure what is wrong.</li> </ol>	<p>Check the storage tank.</p> <p>If tap water is not supplied, close the tap water valve.</p> <p>Open the tap water valve.</p> <p>Call our service department.</p>
Water is leaking	<ol style="list-style-type: none"> <li>1. Is water coming out of the top cover or the purifier?</li> </ol>	<p>After checking the inside of the product, close the tap water valve, unplug the power cord and call our service department.</p>



## System Warranty

### Warranty is the responsibility of the re-seller.

This product is warranted for one year from the date of sale against all defects except plastic components, rubber and their assembly there of. In the event of any complaint, please contact your dealer or the nearest company service center.

This warranty is valid only when...	This warranty does not apply for...
<p>The application has not been opened or tampered with, by any unauthorized person.</p> <p>The unit is brought to and taken from the service center at the customer's cost and risk.</p> <p>The guarantee card or cash memo duly signed by the authorised dealer are presented with the complaint</p> <p>The application has been installed, used and maintained in accordance with the instruction manual.</p>	<p>Damage due to chipping peeling, plating, and denting,</p> <p>Breakage or damage to components of Bakelite, urea, ABS, SAN and such plastic material, rubber parts and cord.</p> <p>The items that are subject to normal wear and tear due to operations.</p> <p>Damage resulting from accidents, mishandling or negligence on part of customer.</p>



### Technical Specifications

MODEL NAME	Karvy Plus
PURIFYING TECHNOLOGY	RO+UF+TDS+ESSENTIAL MINERAL
APPLICABLE TDS RANGE IN INPUT WATER	UP TO 1500 MG/LT
INSTALLATION TYPE	TABLE TOP AND WALL MOUNTING
PURIFIED WATER FLOW RATE	8 LIT/HR
STORAGE TANK CAPACITY	9 LITERS (APPROX)
TDS REDUCTION	90% (APPROX)
% WATER RECOVERY	27% APPROX
NET WEIGHT	11.5 KG (APPROX)
OPERATING INPUT	VOLTAGE 230V AC150HZ
UF CARTRIDGE	HF CAPILLARY UF MEMBRANE WITH 0.01 POROSITY
RO MEMBRANE	75 GPD
MEMBRANE TYPE	THIN FILM COMPOSITE RO
BOOSTER PUMP VOLTAGE	24V DC
INPUT WATER TEMPERATURE	5 DEGREE C -45 DEGREE C
INPUT WATER CHLORINE	0.2 MG/LT (MAX)
INPUT WATER IRON	0.3 MG/LT (MAX)
INPUT WATER TURBIDITY	15 NTU (MAX)

Note: Technical Specifications are subject to change without prior notice.  
 \*Flow rate and other parameters depend on the input water pressure and condition of the filters.



### WARRANTY CARD

Name of Customer: \_\_\_\_\_

Contact No: (R) \_\_\_\_\_ (M) \_\_\_\_\_

Postal Address: \_\_\_\_\_  
 \_\_\_\_\_  
 \_\_\_\_\_

Date of invoice: \_\_\_\_\_ Date of installation: \_\_\_\_\_

Modal No: \_\_\_\_\_ Unit No: \_\_\_\_\_

Membrane No: \_\_\_\_\_ Pump No: \_\_\_\_\_

Dealer Stamp & Sign.: \_\_\_\_\_

\_\_\_\_\_  
Signature of sales person

\_\_\_\_\_  
Customer signature



An ISO 9001:2008 Certified Company





**WARRANTY CARD**

Dear Customer,

Congratulations! You have become a proud owner of Propello Water Purifier, the model mentioned below is covered under warranty against all manufacturing defects for a period of 12 months from the date of purchases subject to the conditions mentioned overleaf.

Model:

SI No.:

Bill No.:

Purchasing Dealer's Name with signature & seal:

**Warranty Terms & Conditions**

*The goods are warranted against all manufacturing defects for a period of 12 months from the date of purchase subject to the following conditions:*

- A. The warranty does not cover items that are subject to normal wear and tear due to operations.
- B. Defective purifier with valid warranty card and original bill to be produced to the authorized service franchise or service dealer by the customer's own cost during working hours.
- C. This warranty does not cover defects as result of accident / damage due to transit or misuse.
- D. This warranty is not applicable if the damage is a result of attractions, unauthorized repairs, tampering or alteration of any part, unauthorized installation or damages caused as a result of natural calamity, riots or any unnatural circumstances.
- E. Consumable items will not be covered under warranty.
- F. This warranty is valid only when it bears the signature and stamp of the authorized dealer.
- G. The defective item or component will be replaced / repaired at the sole discretion of Propello Innovations Pvt. Ltd. And the replaced parts will be the property of Propello Innovations Pvt. Ltd.
- H. This product is intended for domestic use and not for commercial use. The purified water is intended for drinking purpose only and any other use such as bathing, washing etc. will lead to cancellation of warranty.
- I. All disputes are subject to Kolkata jurisdiction.
- J. The machine has a limited purifying capacity designed only for drinking purposes the warranty will not be valid purified water used for other purposes.

\_\_\_\_\_  
Customer's Signature



**SERVICE RECORD**

VISIT TYPE : _____	Date : _____	VISIT TYPE : _____	Date : _____
Remarks : _____ _____ _____ _____ _____ _____		Remarks : _____ _____ _____ _____ _____ _____	
Signature _____	Name of service person _____	Signature _____	Name of service person _____
VISIT TYPE : _____	Date : _____	VISIT TYPE : _____	Date : _____
Remarks : _____ _____ _____ _____ _____ _____		Remarks : _____ _____ _____ _____ _____ _____	
Signature _____	Name of service person _____	Signature _____	Name of service person _____