

**Propello Innovations Pvt. Ltd.**

Registered Office: 6, Sarat Chatterjee Road | Kolkata - 700 089

info@propello.in | Web: www.propello.in | Toll Free 1800 121 0600 | propelloinnovation

Branch Office: Guwahati | Bhubneswar | Patna

CIN: U74900WB2009PTC137818

Toll Free No. : 1800 121 0600

## USER MANUAL FOR STILEZ NEO, CLASSIC & GLOW



## Cooker hood Instruction Manual

| Page | Content              |
|------|----------------------|
| 2    | Feature              |
| 3    | Installation         |
| 4    | Installation         |
| 5    | Safety Warning       |
| 6    | Speed Adjustment     |
| 7    | Maintenance          |
| 8    | Abnormity & Solution |

1. Thank you for choosing our cooker hood. Please read the instruction manual carefully before use.
2. The installation work must be undertaken by a qualified and competent fitter.
3. The manufacturer disclaims all liability for any damage or injury caused as a result of not following text, instructions for installation contained in the following text. The cooker hood is used on 220/240v. 50 Hz.

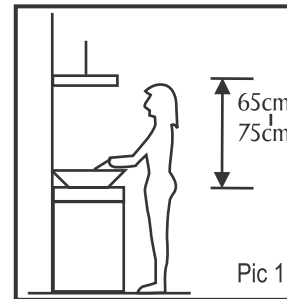
**(2) FEATURE**

1. The cooker hood uses high quality materials and is made with a streamlined design.
2. Equipped with a large power low noise electric motor and centrifugal leaf it produces strong suction, low noise, non stick grease filter and easy to clean.
3. With the isolated low voltage circuit board control. 12VDC input, the lights are therefore safer.
4. Special wind tunnel construction oil collector design, free dirt will be adsorbed in a second.

**(2A) FEATURE**

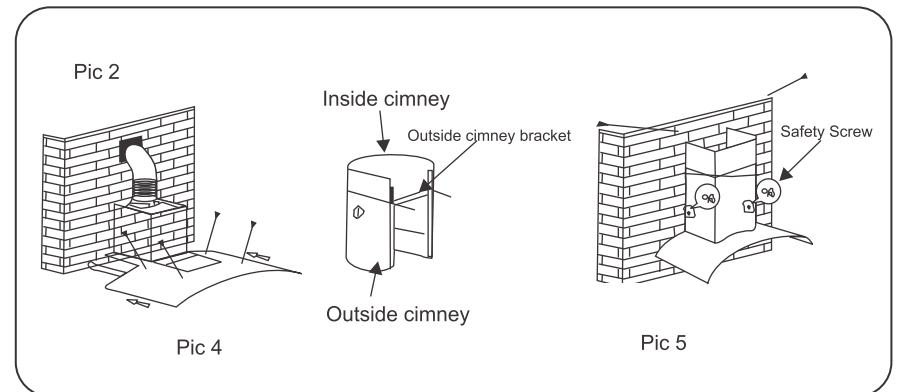
| Chimneys               | Stilez Neo     | Classic        | Glow           |
|------------------------|----------------|----------------|----------------|
| Particulars            | Details        | Details        | Details        |
| Size                   | 90 CM          | 75 CM          | 60 CM          |
| Filter Type            | Oil Collector  | Oil Collector  | Oil Collector  |
| Body Type & Colour     | SS             | SS             | SS             |
| Glass Type             | Tempered       | Tempered       | Tempered       |
| Switch Type            | Push Button    | Push Button    | Push Button    |
| Air outlet [dimension] | 160 mm         | 160 mm         | 160 mm         |
| Motor Wattage          | 180 W          | 180 W          | 180 W          |
| Speed                  | Two            | Two            | Two            |
| No. of motor           | One            | One            | One            |
| No. of Lamp & type     | 2 nos & Led    | 2 nos & Led    | 2 nos & Led    |
| Suction Power          | 1200 m3/hr     | 1200 m3/hr     | 1200 m3/hr     |
| Voltage                | 220 - 240/50hz | 220 - 240/50hz | 220 - 240/50hz |

- 3.1 The cooker hood should be placed at a distance of 55-75 cm (21-30inch) from the cooking surface for the best effect. See pic 1.
- 3.2 Install the hook on a suitable place once the installation height is fixed and keep it in line. The fixed position of the inside chimney bracket is the place of chimney.
- 3.3 Fix the extensible pipe according to the lead direction and way, and then put the cooker hood on the hook. See pic 3.
- 3.4 put the glass according to the lead direction and way on the cooker hood, and then use the screws to fix the glass, also lead the extensible pipe outside of the room, meanwhile adjust the height of the inside chimney bracket and fix on it by screw, here should be sure the inside chimney bracket can be flexed freely. See pic 4.



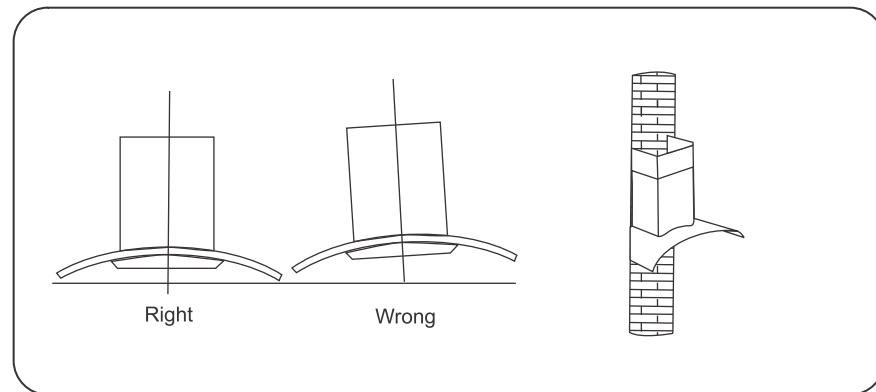
- 3.5 Put the tow chimney together onto the cooker hood body, meanwhile adjust the height of the inside chimney into the suitable height, and fix the inside chimney to the inside chimney bracket by screw. Finally, fix the body with safety screw. See pic 5.

Note: The two safety vents are positioned on the back 75cm casing, with diameter of 6 mm.



#### (4) NOTICE OF INSTALLATION

1. Before installation, please ensure the area is clean to avoid suction of the remaining bits of broken wood and dust.
2. It cannot share the same air ventilation tube with other appliance such as gas tube, warmer tube, and hot wind tube.
3. The bending of ventilation tube should be  $>120^\circ$ , parallel or above the start point and should be connected to the external wall.
4. After installation, make sure that the extractor is level to avoid grease collection at one end.



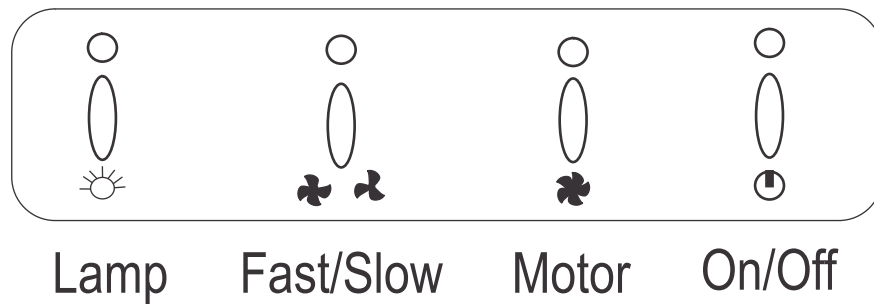
#### (5) SAFETY WARNING

1. Keep your children from using the cooker hood.
2. Your cooker hood is for domestic use only, not suitable for barbecue, roast shop and other commercial use. shop and other commercial use.
3. Any installation wo<sup>^</sup> must be carried out by a qualified electrician or competent person.
4. The cooker hood and its filter mesh should be cleaned regularly in order to keep in good working order.
5. Before cleaning, always ensure that you switched your cooker hood off.
6. Clean the cooker hood according to the instruction manual and keep the cooker hood from the danger of burning.
7. No fire for drying your cooker hood
8. If there is any fault with your cooker hood, please call the service department appointed by agent for servicing, department appointed by agent for servicing.
9. Please keep the room draughty when your cooker hood and gas hob are working.
10. Do not exhaust the gas from cooker hood through the same heated flue which is for the gas from gas hob and other kitchen appliances.
11. Before installation and usage, read all the instructions and make sure that the voltage (V) and the frequency (Hz) indicated on your cooker hood are exactly the same as voltage (V) and the frequency (Hz) in your home.
12. In order to get the most out of your cocker nood, please read the instruction manual before installing & using, and keep it in a safe place.
13. Ensure that you could get our guarantee for your cooker hood, please provide the warranty card and purchase receipt, or the guarantee will not be offered.

## (6) SPEED ADJUSTMENT SEE PICTURES

### Push button

1. Push on/off button to put the chimney on. Push it again to put it off.
2. Push the motor button to start the motor. Push it again to stop it.
3. Push the fast/slow button to control the speed of the motor.
4. Push the lamp button and the two lights will come on. Push it again and the light will turn off.



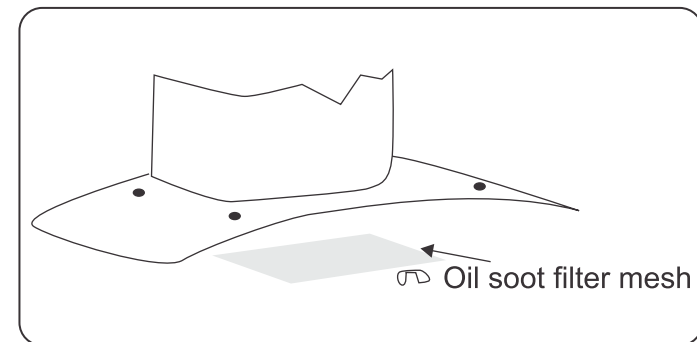
## (7) Maintenance

### 7.1 The cleaning of the carbon grease filter mesh

The filter mesh is made of high-density stainless steel. Please do not use the corrosive detergent on it. Keeping this filter clean will keep the appliance running correctly. Please strictly follow the guidelines below.

Method 1: Put mesh into 40-50 c clean water, pour on detergent, and soak for 2-3 mins. Wear gloves and clean with a soft brush. Please do not apply too much pressure, as the mesh is delicate and will damage easy.

Method 2: If instructed to do so, it can be put into a dishwasher, set the temperature at around 60 degrees.



### 7.2 Notice of cleaning cooker hood

- A. To protect the main body from corrosion over a long period if time, the cooker hood should be cleaned with hot water plus non corrosive detergent every two months.
- B. Please do not use abrasive detergent for it will damage the body.
- C. Keep the motor and other spare parts free from eater, as this will cause damage to the appliance.
- D. Before cleaning the appliance please remember to cut off power
- E. The carbon filter shouldn't exposed to heat.
- F. If the plug or cord is damaged, please replace it with special soft cord.



## 8. ABNORMITY AND SOLUTION

| Fault  | Cause   | Solution   |
|--|---|--|
| Light on, but motor does not work                | The leaf blocked  | Get rid of the blocking                                |
|  | The capacitor dammed  | Replace capacitor                                      |
|  | The motor jammed bearing damaged                                      | Replace motor  |
|  | The internal with of motor off or a bad smell from the motor          | Replace motor  |
| Beside the above mentioned, check the following: |   |  |
| Light does not work<br>motor does not work       | Light damaged   | Replace Lights   |
|  | Power code looses   | Connect the wires as per the electric diagram          |
| Fault  | Cause   | Solution   |
| Oil leakage                                      | One way valve and the air ventilation entrance are not tightly sealed | Take down the one way valve and seal the glue          |
|  | Leakage from the connection of U-shaped section and cover             | Take U-shaped section down and seal with soap or paint |
| Shake of the body                                | The leaf damaged and causes shaking                                   | Replace the leaf                                       |
|  | The motor is not tightly hanged                                       | Lock the motor tightly                                 |
|  | The body is not tightly hanged  | Fix the body tightly                                   |
| Insufficient suction                             | The distance between the body and the gas top too long                | Readjust the distance                                  |
|  | Too much ventilation from open doors or windows                       | Choose a new place and resemble the machine            |
| The machine inclines                             | The fixing screw not tight enough                                     | Tighten the hanging screw and make it horizontal       |
|  | The fixing screw not tight enough                                     | Tighten the hanging screw and make it horizontal       |

## Warranty Card

Dear Customer,

Congratulations! You have become a proud owner of Propello Kitchen hood / Appliances, the model mentioned below is covered under warranty against all manufacturing defects for a period of 12 months (the motor carries a Lifetime warranty) from the date of purchases subject to the conditions mentioned below ,

Model:

SI No.:

Bill No.:

Purchasing Dealer's Name with signature & seal:

### Warranty Terms & Conditions

The goods are warranted against all manufacturing defects for a period of 12 months (the motor carries a lifetime warranty) from the date of purchase subject to the following conditions.

- A. The warranty does not cover charcoal filter, bulbs, glass parts and such other items that are subject to normal wear and tear due to operations
- B. Defective cooker hood with valid warranty card and original bill to be produced to the authorized service franchise or service dealer by the customer's own cost during working hours or upon visit.
- C. This warranty does not cover defects as result of accident/ damage due to transit or misuse.
- D. This warranty is not applicable if the damage is a result of attractions, unauthorized repairs, tampering or alteration of any part, unauthorized installation or damages caused as a result of natural calamity, nots or any unnatural circumstances and any kind of electrical malfunction including high voltage supply.
- E. This warranty is valid only when it bears the signature and stamp of the authorized dealer
- F. The defective item or component will be replaced / repaired at the sole discretion of Propello Innovations Pvt. Ltd. and the replaced parts will be the property of Propello Innovations Pvt Ltd.
- G. This product is intended for domestic use and not for commercial use.
- H. All disputes are subject to Kolkata jurisdiction

Customer's Signature



An ISO 9001:2008 Certified Company